

4 WAY TASK

Design:2020

Application

Task

Breakout

Hot desk



4WAY TASK



- A. Active tilt/reclining
- B. Slim profile upholstered shell
- C. Die cast aluminum arm rests (optional)
- D. Gas lift 5-way swivel Die cast base
- E. Twin wheel nylon castors

Arm/Base finish:

Black



4TSK-1-S/T

Dimensions:
48cmW x 48cmD x 40-52cmH
Seat Height: 49cm
Seat Width: 48cm



House PU: Quicktan
(Other local fabrics available)

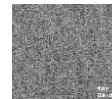


House fabric: Quickteal
(Other local fabrics available)



4TSK-2-S/T

Dimensions:
59cmW x 48cmD x 40-52cmH
Seat Height: 49cm
Seat Width: 48cm
Arm overall Height: 60-72cmH



House fabric: Quicksilver
(Other local fabrics available)



House fabric: QuickBlack PU
(Other local fabrics available)

